

Tapeswitch Control Units



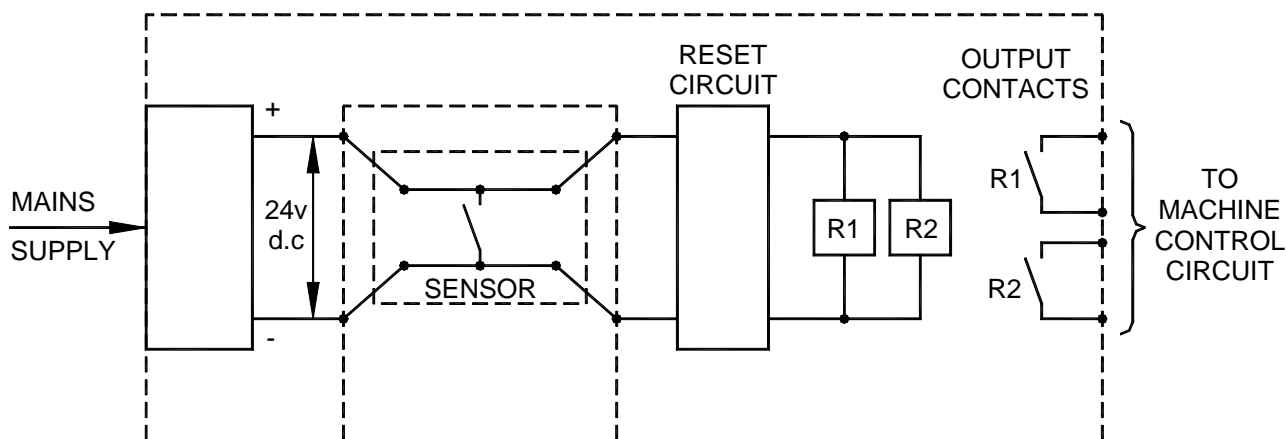
Features

- Complete fail-safe system
- EN13849
- Variety of enclosure styles
- Choice of input controls

Tapeswitch control units act as an interface between the Tapeswitch sensor and the end-user device (machine and/or process control).

They can be specifically engineered to meet the customer's requirements based on the type of application and environment.

Fail-safe wiring principle



Technical Specification

	Type	Safety Standard	Supply Voltage	Mounting Option	Reset Mode	Output Contacts
PSSU/1	Safety	EN13489-PLd	110/230V a.c.	DIN Rail	Manual	2xN/O, 2A@240V
PSSU/2	Safety	EN13489-PLd	24V d.c.	DIN Rail	Manual	2xN/O, 2A@240V
PSSU/3	Safety	EN13489-PLd	110/230V a.c.	Surface Mounted	Manual	2xN/O, 2A@240V
PSSU/4	Safety	EN13489-PLd	24V d.c.	Surface Mounted	Manual	2xN/O, 2A@240V
PSSU/6	Safety	EN13489-PLd	24V d.c.	Surface Mounted	Manual/auto	2xN/O, 2A@240V
PRSU/4	Safety	EN13489-PLd	24V d.c.	DIN Rail	Manual/auto	3xN/O, 2A@240V
PSSR-2	Safety	EN13489-PLd	24V d.c.	DIN Rail	Manual/auto	2xN/O, 1xN/C 5A@240Vac
SRUS	Safety	EN13489-PLe	24V d.c.	DIN Rail	Manual/auto	3xN/O, 6A@240V d.c.