

CLAMP MOUNTING BRACKET KIT - TYPE CB INSTALLATION INSTRUCTIONS

The clamp mounting brackets and their associated hardware are provided with the emitter and receiver units. The brackets have been specially designed to allow adjustment.

Each unit is supplied with two clamp brackets fitted. The clamp bracket is a short piece of extruded aluminium which is designed to interlock with the unit housing extrusion and clamps in position on the rear of the housing by means of two grub screws supplied. The clamp bracket dimensions are shown in Figure 1.

The clamp brackets can be moved to any position over the length of the unit.

Four wall brackets are supplied with each system together with the 8 self tapping screws needed to fix the wall brackets to the clamp brackets. The wall bracket dimensions are shown in Figure 2.

The alternative mounting arrangements which these brackets facilitate are shown in Figures 3, 4 and 5.

The internal construction of the units is such that they withstand normal levels of vibration and shock. In situations where the vibration of the machine cannot be reduced to normal levels, vibration proofing mountings should be used.

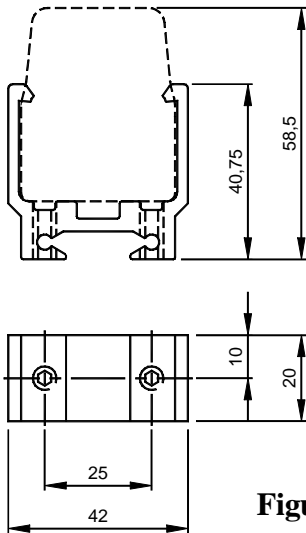


Figure 1

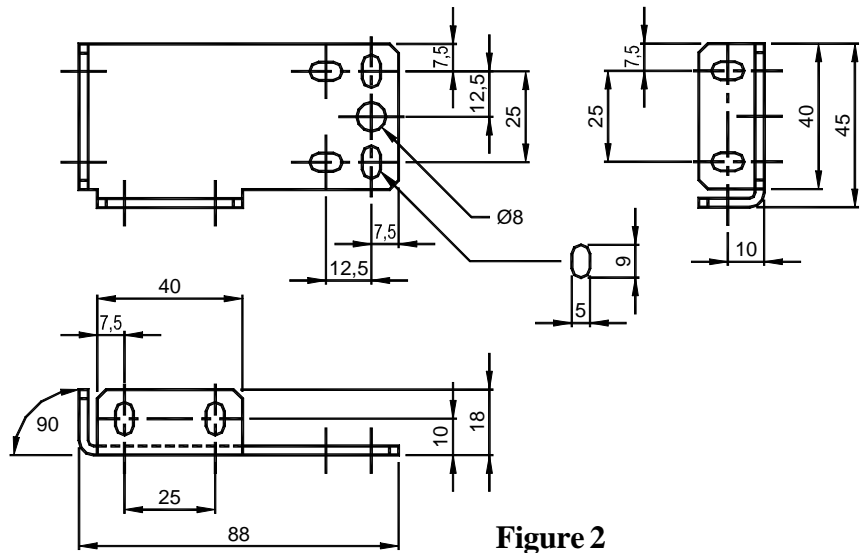


Figure 2

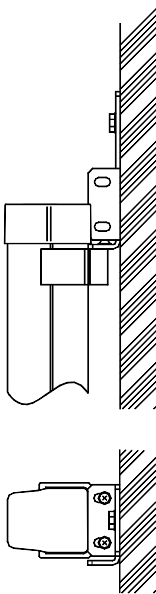


Figure 3

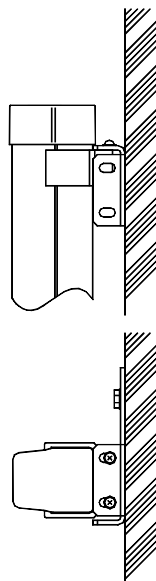


Figure 4

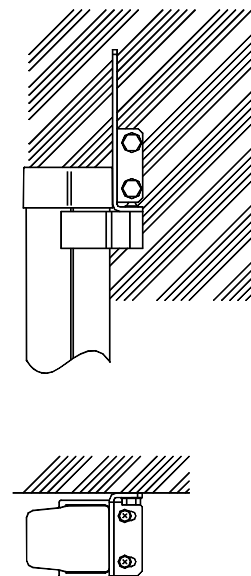


Figure 5